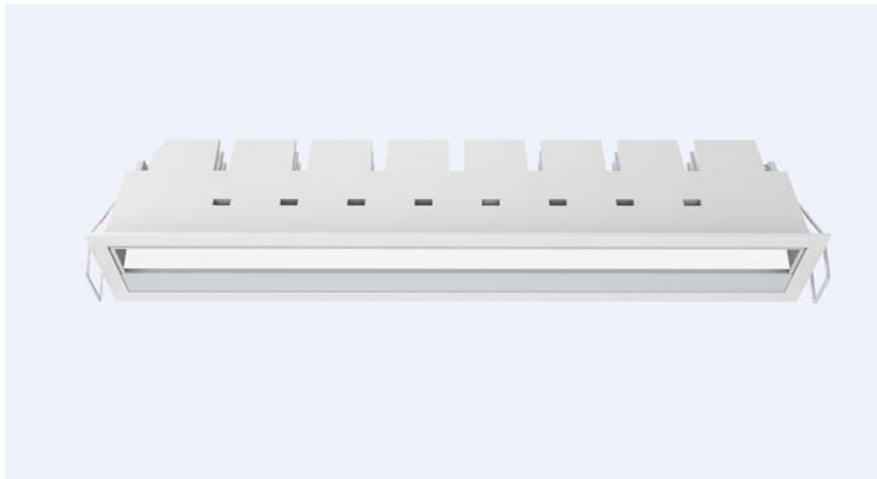

LED Downlight FUSION Series LE-
FW10-22W-830



Light Output Ratio:	100.0%	
Luminaire Power:	22.62 W	
SHR Nominal:	1.25	Calculated using the TM5
SHR Maximum:	1.35	fine grid method.

C Range: 0 - 360DEG
C Interval: 15.0DEG
Test Speed: HIGH
Temperature: 25.3DEG
Operators: Meng Yongjian
Test Date: 2016-10-13

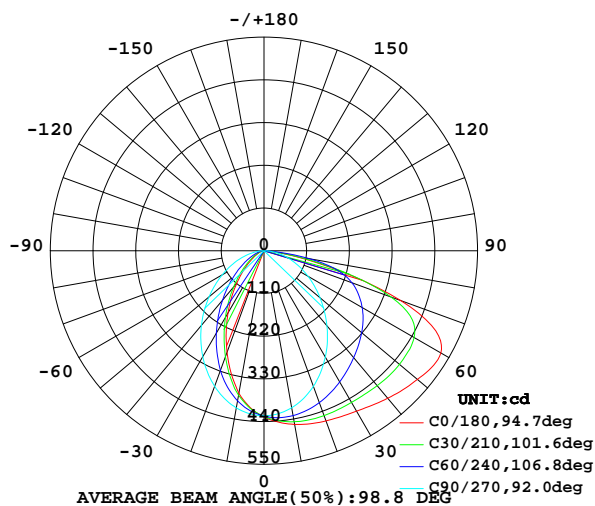
γ Range: 0 - 90DEG
γ Interval: 1.0DEG
Test System: EVERFINE GO-2000B_V1 SYSTEM V2.0.288
Humidity: 52%
Test Distance: 5.850m [K=1.0000]
Remarks:

LUMINAIRE PHOTOMETRIC TEST REPORT

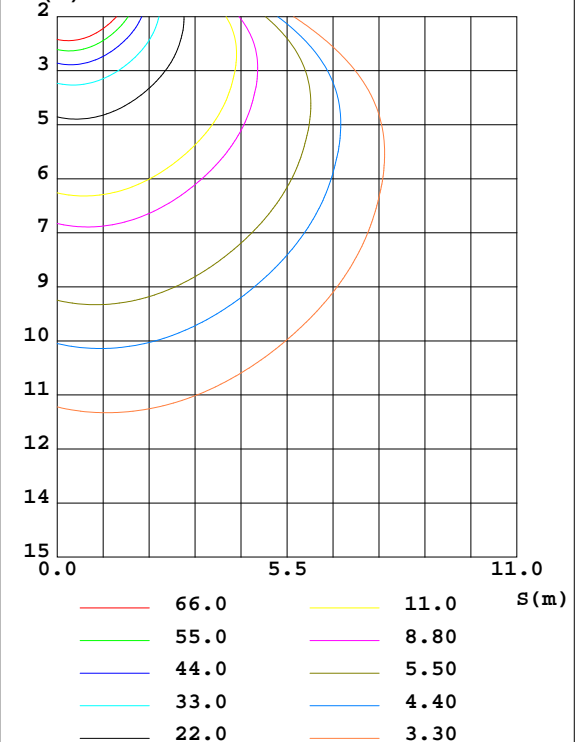
Test:U:220.6V I:0.1083A P:22.62W PF:0.9475 Lamp Flux:1195.89x1 lm		
NAME: FW10-22W-830	TYPE:Downlight	SERIAL No.:
SPEC.:3000K	DIM.: L290mm*W45mm*H60mm	
MFR.:		

DATA OF LAMP		PHOTOMETRIC DATA Eff: 52.86 lm/W			
MODEL	CREE-3000K	I _{max} (cd)	528.2	S/MH(C0/180)	0.78
NOMINAL POWER(W)	24	LOR(%)	100.0	S/MH(C90/270)	1.12
RATED VOLTAGE(V)	220	TOTAL FLUX(lm)	1195.9	η UP,DN(C0-180)	0.0,53.4
NOMINAL FLUX(lm)	1195.89	CIE CLASS	DIRECT	η UP,DN(C180-360)	0.0,46.6
LAMPS INSIDE	1	η up(%)	0.0	CIBSE SHR NOM	1.25
TEST VOLTAGE(V)	220	η down(%)	100.0	CIBSE SHR MAX	1.35

LUMINOUS INTENSITY DISTRIBUTION DIAGRAM



C0 PLANE ISOLUX DIAGRAM (UNIT:lx)



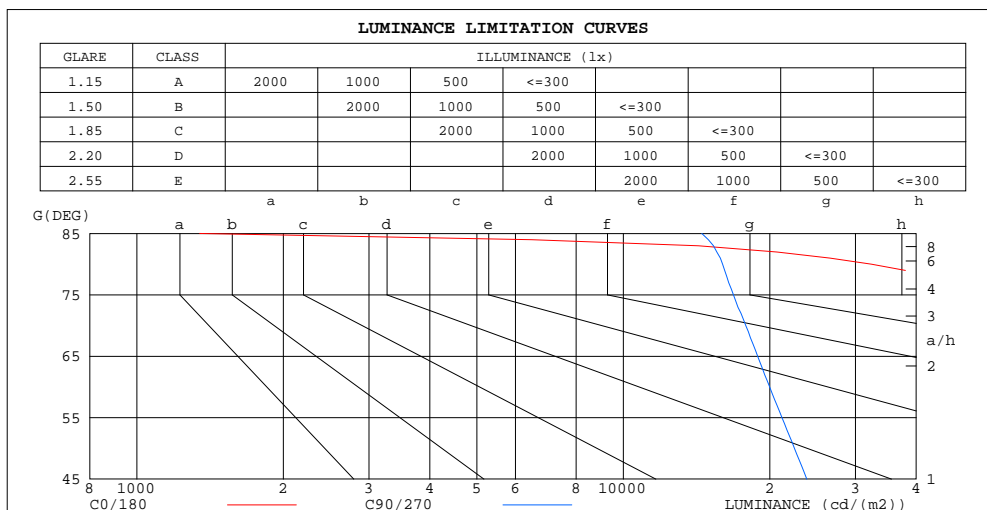
C Range: 0 - 360DEG
 C Interval: 15.0DEG
 Test Speed: HIGH
 Temperature:25.3DEG
 Operators:Meng Yongjian
 Test Date:2016-10-13

γ Range: 0 - 90DEG
 γ Interval: 1.0DEG
 Test System:EVERFINE GO-2000B_V1 SYSTEM V2.0.288
 Humidity:52%
 Test Distance:5.850m [K=1.0000]
 Remarks:

ZONAL FLUX DIAGRAM AND LUMINANCE LIMITATION CURVES

ZONAL FLUX DIAGRAM:

γ	C0	C45	C90	C135	C180	C225	C270	C315	γ	Φ zone	Φ total	$\%lum, lamp$
10	454.0	439.9	410.6	381.9	372.5	383.1	410.8	437.9	0- 10	39.92	39.92	3.34,3.34
20	466.3	436.3	371.8	305.3	278.4	305.0	371.7	434.2	10- 20	110.6	150.5	12.6,12.6
30	476.9	423.6	316.0	218.0	185.7	216.7	315.3	421.3	20- 30	159.6	310.1	25.9,25.9
40	495.8	409.8	252.3	140.1	109.1	138.6	250.7	406.8	30- 40	186.6	496.7	41.5,41.5
50	515.4	395.5	188.6	80.20	56.00	79.37	184.9	391.6	40- 50	197.4	694.1	58,58
60	525.8	370.1	130.4	41.33	25.80	40.35	124.0	364.9	50- 60	197.3	891.4	74.5,74.5
70	373.4	308.0	79.71	19.37	11.47	18.52	72.12	305.1	60- 70	179.7	1071	89.6,89.6
80	73.34	102.7	36.26	7.530	4.750	7.145	29.25	109.2	70- 80	106.2	1177	98.5,98.5
90	0.1946	0.5204	0.9446	0.8724	0.6472	0.7303	0.5619	0.3214	80- 90	18.53	1196	100,100
100									90-100			
110									100-110			
120									110-120			
130									120-130			
140									130-140			
150									140-150			
160									150-160			
170									160-170			
180									170-180			
DEG	LUMINOUS INTENSITY:cd									UNIT:lm		



LUMINANCE cd/(m2)		
G(DEG)	C0/180	C90/270
85	1346	14494
80	32363	16000
75	60786	16847
70	83661	17858
65	88459	18890
60	80582	19985
55	70233	21185
50	61442	22482
45	54845	23839

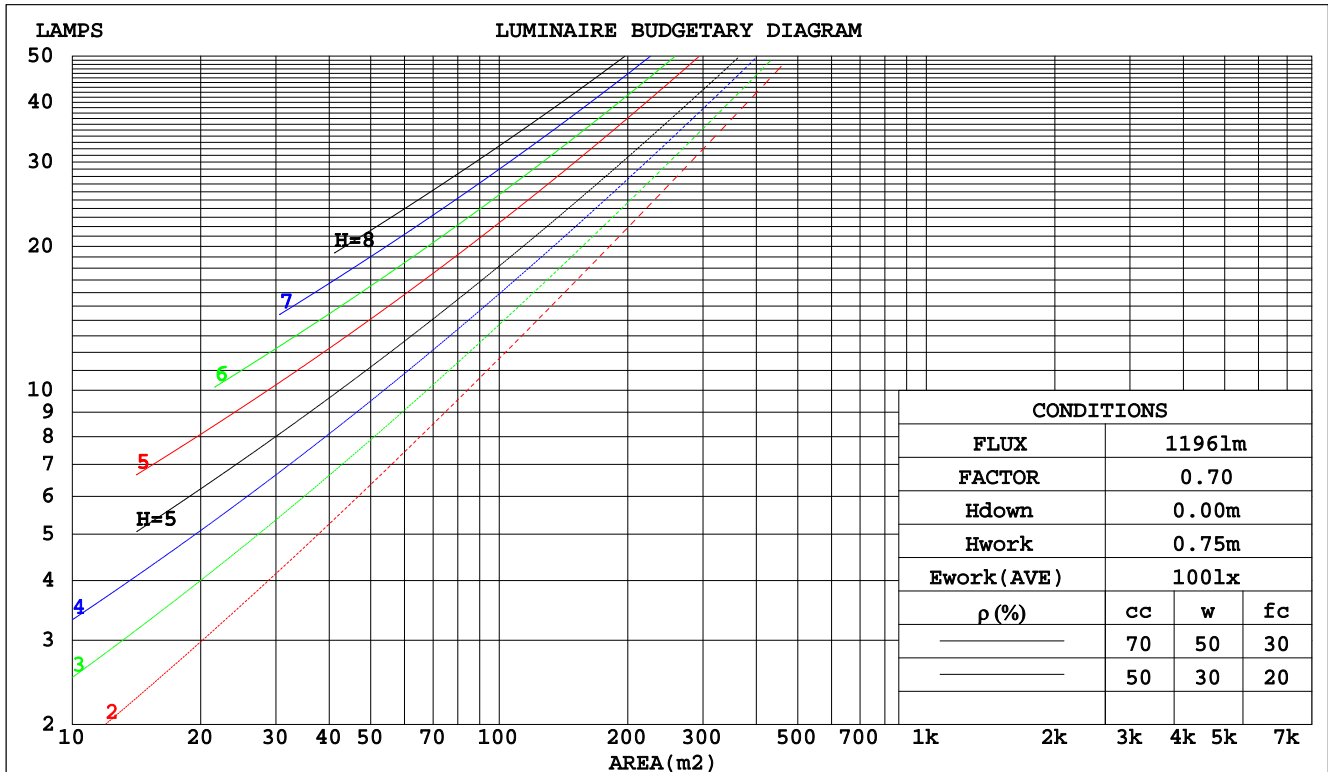
C Range: 0 - 360DEG
C Interval: 15.0DEG
Test Speed: HIGH
Temperature:25.3DEG
Operators:Meng Yongjian
Test Date:2016-10-13

γ Range: 0 - 90DEG
 γ Interval: 1.0DEG
Test System:EVERFINE GO-2000B_V1 SYSTEM V2.0.288
Humidity:52%
Test Distance:5.850m [K=1.0000]
Remarks:

CU AND LUMINAIRE BUDGETARY ESTIMATE DIAGRAM

Test:U:220.6V I:0.1083A P:22.62W PF:0.9475 Lamp Flux:1195.89x1 lm		
NAME: FW10-22W-830	TYPE:Downlight	SERIAL No.:
SPEC.:3000K	DIM.: L290mm*W45mm*H60mm	
MFR.:		

pcc	80%			70%			50%			30%			10%			0
pw	50%	30%	10%	50%	30%	10%	50%	30%	10%	50%	30%	10%	50%	30%	10%	0
pfc	20%			20%			20%			20%			20%			0
RCR	RCR:Room Cavity Ratio						Coefficients of Utilization(CU)									
0.0	1.19	1.19	1.19	1.16	1.16	1.16	1.11	1.11	1.11	1.06	1.06	1.06	1.02	1.02	1.02	1.00
1.0	1.03	.99	.95	1.01	.97	.93	.97	.93	.90	.93	.90	.87	.89	.87	.85	.83
2.0	.89	.82	.76	.87	.81	.75	.84	.78	.73	.80	.76	.72	.77	.73	.70	.68
3.0	.78	.69	.62	.76	.68	.62	.73	.66	.61	.70	.64	.60	.68	.63	.59	.56
4.0	.69	.59	.52	.67	.59	.52	.65	.57	.51	.62	.56	.51	.60	.54	.50	.48
5.0	.61	.52	.45	.60	.51	.45	.58	.50	.44	.56	.49	.44	.54	.48	.43	.41
6.0	.55	.46	.39	.54	.45	.39	.52	.44	.38	.50	.43	.38	.49	.43	.38	.36
7.0	.50	.41	.34	.49	.40	.34	.47	.40	.34	.46	.39	.34	.44	.38	.33	.31
8.0	.45	.37	.31	.45	.36	.31	.43	.36	.30	.42	.35	.30	.41	.35	.30	.28
9.0	.42	.33	.28	.41	.33	.27	.40	.32	.27	.39	.32	.27	.38	.32	.27	.25
10.0	.38	.30	.25	.38	.30	.25	.37	.30	.25	.36	.29	.25	.35	.29	.25	.23



C Range: 0 - 360DEG
 C Interval: 15.0DEG
 Test Speed: HIGH
 Temperature: 25.3DEG
 Operators: Meng Yongjian
 Test Date: 2016-10-13

γ Range: 0 - 90DEG
 γ Interval: 1.0DEG
 Test System: EVERFINE GO-2000B_V1 SYSTEM V2.0.288
 Humidity: 52%
 Test Distance: 5.850m [K=1.0000]
 Remarks:

WEC AND CCEC

Test:U:220.6V I:0.1083A P:22.62W PF:0.9475 Lamp Flux:1195.89x1 lm		
NAME: FW10-22W-830	TYPE:Downlight	SERIAL No.:
SPEC.:3000K	DIM.: L290mm*W45mm*H60mm	
MFR.:		

pcc	80%			70%			50%			30%			10%			0	
pw	50%	30%	10%	50%	30%	10%	50%	30%	10%	50%	30%	10%	50%	30%	10%	0	
pfc	20%			20%			20%			20%			20%			0	
RCR	RCR:Room Cavity Ratio						Wall Exitance Coefficients(WEC)										
0.0																	
1.0	.322	.183	.058	.315	.180	.057	.302	.173	.055	.290	.167	.054	.278	.161	.052		
2.0	.304	.167	.051	.298	.164	.051	.286	.159	.049	.275	.154	.048	.265	.150	.047		
3.0	.280	.149	.045	.275	.147	.044	.264	.143	.044	.255	.140	.043	.246	.136	.042		
4.0	.257	.134	.039	.253	.132	.039	.243	.129	.039	.235	.126	.038	.227	.123	.038		
5.0	.237	.121	.035	.233	.119	.035	.224	.117	.034	.217	.114	.034	.209	.112	.034		
6.0	.219	.110	.031	.215	.109	.031	.208	.106	.031	.201	.104	.031	.194	.102	.030		
7.0	.203	.100	.028	.200	.099	.028	.193	.098	.028	.187	.096	.028	.181	.094	.028		
8.0	.189	.092	.026	.186	.092	.026	.180	.090	.026	.175	.088	.026	.169	.087	.025		
9.0	.177	.085	.024	.174	.085	.024	.169	.083	.024	.164	.082	.023	.159	.081	.023		
10.0	.166	.080	.022	.163	.079	.022	.159	.078	.022	.154	.077	.022	.150	.075	.022		

pcc	80%			70%			50%			30%			10%			0
pw	50%	30%	10%	50%	30%	10%	50%	30%	10%	50%	30%	10%	50%	30%	10%	0
pfc	20%			20%			20%			20%			20%			0
RCR	RCR:Room Cavity Ratio						Ceiling Cavity Exitance Coefficients(CCEC)									
0.0	.190	.190	.190	.163	.163	.163	.111	.111	.111	.064	.064	.064	.020	.020	.020	
1.0	.181	.156	.133	.155	.134	.115	.106	.092	.079	.061	.053	.046	.020	.017	.015	
2.0	.174	.132	.097	.149	.113	.083	.102	.079	.058	.059	.046	.034	.019	.015	.011	
3.0	.166	.114	.073	.143	.099	.063	.098	.069	.044	.057	.040	.026	.018	.013	.009	
4.0	.159	.101	.057	.136	.087	.050	.094	.061	.035	.054	.036	.021	.017	.012	.007	
5.0	.151	.091	.046	.130	.079	.040	.090	.055	.028	.052	.032	.017	.017	.011	.006	
6.0	.144	.083	.038	.124	.071	.033	.085	.050	.024	.050	.029	.014	.016	.010	.005	
7.0	.137	.076	.033	.118	.066	.028	.081	.046	.020	.047	.027	.012	.015	.009	.004	
8.0	.130	.070	.028	.112	.061	.025	.078	.043	.017	.045	.025	.010	.015	.008	.003	
9.0	.124	.065	.025	.107	.056	.022	.074	.040	.015	.043	.023	.009	.014	.008	.003	
10.0	.118	.061	.022	.102	.053	.019	.071	.037	.014	.041	.022	.008	.013	.007	.003	

C Range: 0 - 360DEG
 C Interval: 15.0DEG
 Test Speed: HIGH
 Temperature:25.3DEG
 Operators:Meng Yongjian
 Test Date:2016-10-13

γ Range: 0 - 90DEG
 γ Interval: 1.0DEG
 Test System:EVERFINE GO-2000B_V1 SYSTEM V2.0.288
 Humidity:52%
 Test Distance:5.850m [K=1.0000]
 Remarks:

UGR(Unified Glare Rating) Table

Test:U:220.6V I:0.1083A P:22.62W PF:0.9475 Lamp Flux:1195.89x1 lm										
NAME: FW10-22W-830					TYPE:Downlight			SERIAL No.:		
SPEC.:3000K					DIM.: L290mm*W45mm*H60mm					
MFR.:										
ceiling/cavity	0.7	0.7	0.5	0.5	0.3	0.7	0.7	0.5	0.5	0.3
walls	0.5	0.3	0.5	0.3	0.3	0.5	0.3	0.5	0.3	0.3
working plane	0.2	0.2	0.2	0.2	0.2	0.2	0.2	0.2	0.2	0.2
Room dimensions	Viewed crosswise					Viewed endwise				
x = 2H y = 2H	30.6	32.1	30.8	32.3	32.5	25.9	27.5	26.2	27.7	27.9
3H	33.1	34.6	33.4	34.8	35.0	27.4	28.9	27.7	29.1	29.4
4H	33.7	35.1	34.0	35.3	35.6	28.1	29.4	28.4	29.7	30.0
6H	33.9	35.2	34.2	35.5	35.7	28.5	29.8	28.8	30.1	30.4
8H	33.9	35.1	34.2	35.4	35.7	28.6	29.9	29.0	30.2	30.5
12H	33.8	35.0	34.2	35.3	35.6	28.7	29.9	29.0	30.2	30.5
4H 2H	31.1	32.5	31.4	32.8	33.0	28.1	29.4	28.4	29.7	29.9
3H	33.8	35.0	34.2	35.3	35.7	29.9	31.1	30.2	31.4	31.7
4H	34.6	35.7	34.9	36.0	36.3	30.7	31.8	31.1	32.1	32.5
6H	34.8	35.8	35.2	36.1	36.5	31.3	32.3	31.7	32.6	33.0
8H	34.8	35.7	35.2	36.1	36.5	31.5	32.4	31.9	32.8	33.2
12H	34.8	35.6	35.2	36.0	36.4	31.6	32.4	32.0	32.8	33.2
8H 4H	34.8	35.7	35.2	36.1	36.4	31.6	32.5	32.0	32.9	33.3
6H	35.1	35.9	35.5	36.3	36.7	32.4	33.2	32.9	33.6	34.0
8H	35.1	35.8	35.6	36.2	36.7	32.7	33.4	33.2	33.9	34.3
12H	35.1	35.7	35.6	36.1	36.6	32.9	33.5	33.4	34.0	34.4
12H 4H	34.8	35.6	35.2	36.0	36.4	31.6	32.5	32.1	32.9	33.3
6H	35.1	35.8	35.6	36.2	36.7	32.5	33.2	33.0	33.6	34.1
8H	35.1	35.7	35.6	36.2	36.7	32.8	33.4	33.3	33.9	34.4
Variations with the observer position at spacings:										
S = 1.0H	+ 0.1 / - 0.1					+ 0.1 / - 0.2				
1.5H	+ 0.1 / - 0.3					+ 0.3 / - 0.4				
2.0H	+ 0.4 / - 0.5					+ 0.4 / - 0.7				

CIE Pub.117 Corrected 1196 lm Total Lamp Luminous Flux.(8log(F/F0) = 0.6)

C Range: 0 - 360DEG
 C Interval: 15.0DEG
 Test Speed: HIGH
 Temperature:25.3DEG
 Operators:Meng Yongjian
 Test Date:2016-10-13

γ Range: 0 - 90DEG
 γ Interval: 1.0DEG
 Test System:EVERFINE GO-2000B_V1 SYSTEM V2.0.288
 Humidity:52%
 Test Distance:5.850m [K=1.0000]
 Remarks:

UTILIZATION FACTORS TABLE

Test:U:220.6V I:0.1083A P:22.62W PF:0.9475 Lamp Flux:1195.89x1 lm		
NAME: FW10-22W-830	TYPE:Downlight	SERIAL No.:
SPEC.:3000K	DIM.: L290mm*W45mm*H60mm	
MFR.:		

REFLECTANCE										
Ceiling	0.8	0.8	0.8	0.7	0.7	0.7	0.5	0.5	0.5	0
Walls	0.7	0.5	0.3	0.7	0.5	0.3	0.7	0.5	0.3	0
Working plane	0.2	0.2	0.2	0.2	0.2	0.2	0.2	0.2	0.2	0
ROOM INDEX	UTILIZATION FACTORS(PERCENT) $k(RI) \times RCR = 5$									
k = 0.60	56	44	37	55	44	37	54	43	37	30
0.80	66	54	46	65	53	46	63	53	46	39
1.00	74	62	55	73	62	55	71	63	54	47
1.25	81	70	63	80	69	62	77	68	61	54
1.50	86	76	69	85	75	68	82	73	67	59
2.00	94	84	78	92	83	77	88	81	75	67
2.50	98	90	83	96	88	82	92	85	80	72
3.00	101	94	88	99	93	87	95	90	85	76
4.00	106	100	95	103	98	93	99	95	91	82
5.00	108	103	99	106	101	98	101	98	94	85
ROOM INDEX	UF(total)									Direct
According to DIN EN 13032-2 2004			Suspended					SHRNOM = 1.25		

C Range: 0 - 360DEG
 C Interval: 15.0DEG
 Test Speed: HIGH
 Temperature:25.3DEG
 Operators:Meng Yongjian
 Test Date:2016-10-13

γ Range: 0 - 90DEG
 γ Interval: 1.0DEG
 Test System:EVERFINE GO-2000B_V1 SYSTEM V2.0.288
 Humidity:52%
 Test Distance:5.850m [K=1.0000]
 Remarks:

ISOCANDELA DIAGRAM

Test:U:220.6V I:0.1083A P:22.62W PF:0.9475 Lamp Flux:1195.89x1 lm		
NAME: FW10-22W-830	TYPE:Downlight	SERIAL No.:
SPEC.:3000K	DIM.: L290mm*W45mm*H60mm	
MFR.:		

Conical surface Flux(90deg):

594.83 lm

%lum = 49.7%

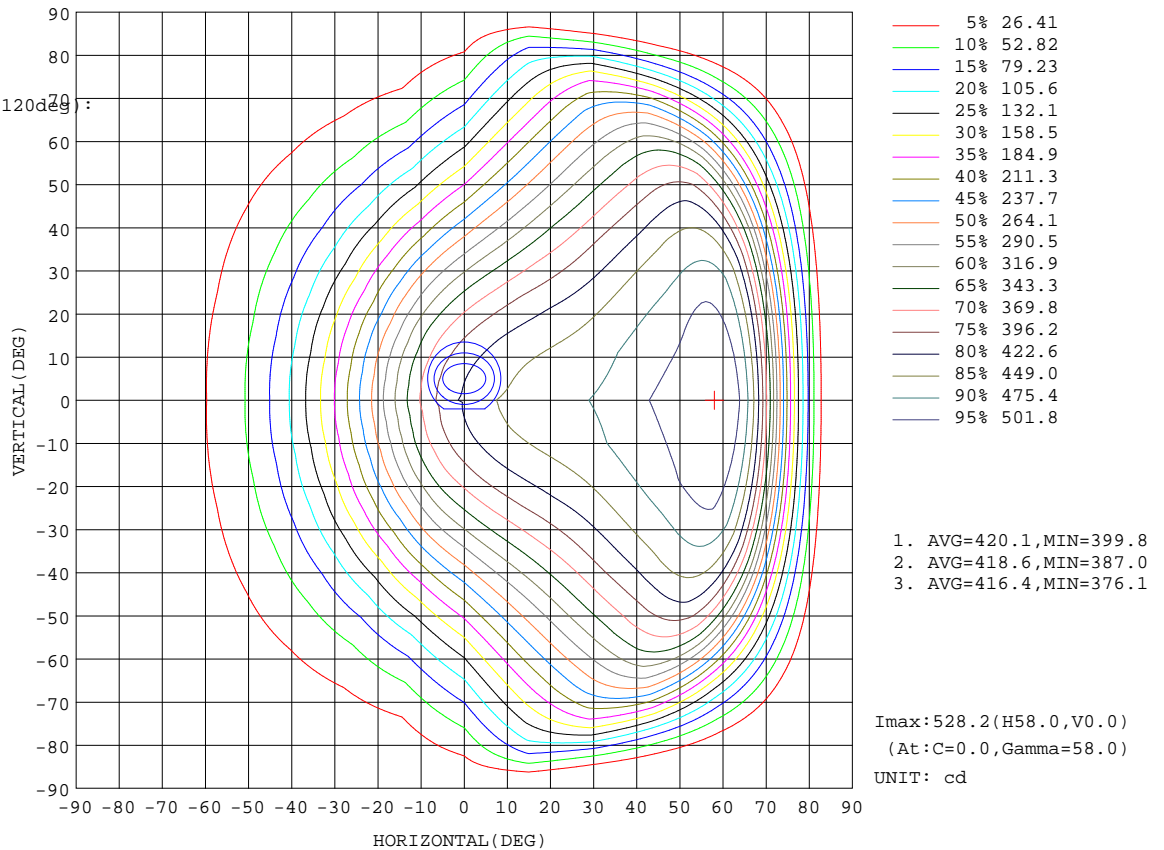
%lamp = 49.7%

Conical surface Flux(120deg):

891.41 lm

%lum = 74.5%

%lamp = 74.5%

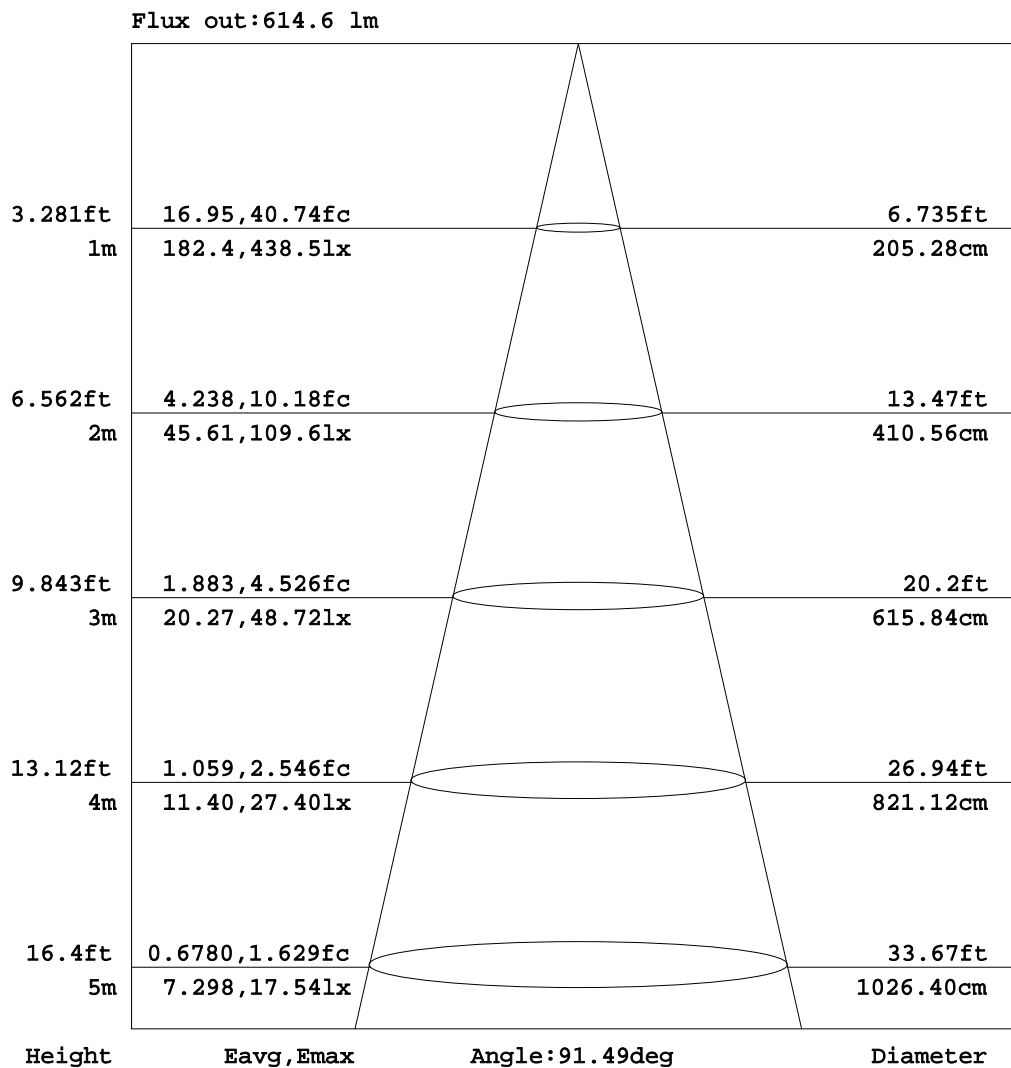


C Range: 0 - 360DEG
C Interval: 15.0DEG
Test Speed: HIGH
Temperature:25.3DEG
Operators:Meng Yongjian
Test Date:2016-10-13

γ Range: 0 - 90DEG
γ Interval: 1.0DEG
Test System:EVERFINE GO-2000B_V1 SYSTEM V2.0.288
Humidity:52%
Test Distance:5.850m [K=1.0000]
Remarks:

AAI Figure

Test:U:220.6V I:0.1083A P:22.62W PF:0.9475 Lamp Flux:1195.89x1 lm		
NAME: FW10-22W-830	TYPE:Downlight	SERIAL No.:
SPEC.:3000K	DIM.: L290mm*W45mm*H60mm	
MFR.:		



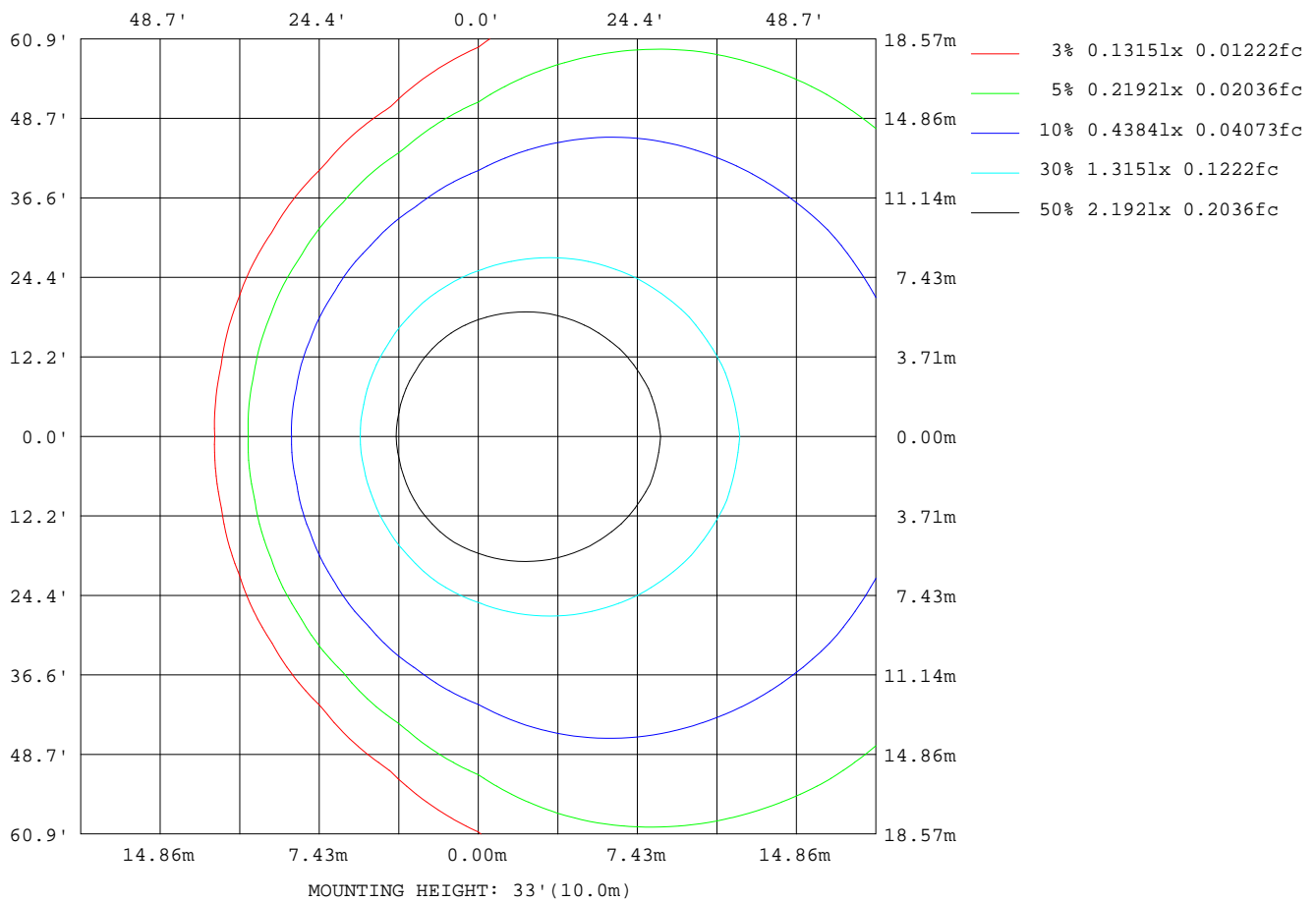
Note:The Curves indicate the illuminated area and the average illumination when the luminaire is at different distance.

C Range: 0 - 360DEG
C Interval: 15.0DEG
Test Speed: HIGH
Temperature:25.3DEG
Operators:Meng Yongjian
Test Date:2016-10-13

γ Range: 0 - 90DEG
γ Interval: 1.0DEG
Test System:EVERFINE GO-2000B_V1 SYSTEM V2.0.288
Humidity:52%
Test Distance:5.850m [K=1.0000]
Remarks:

ISOLUX DIAGRAM

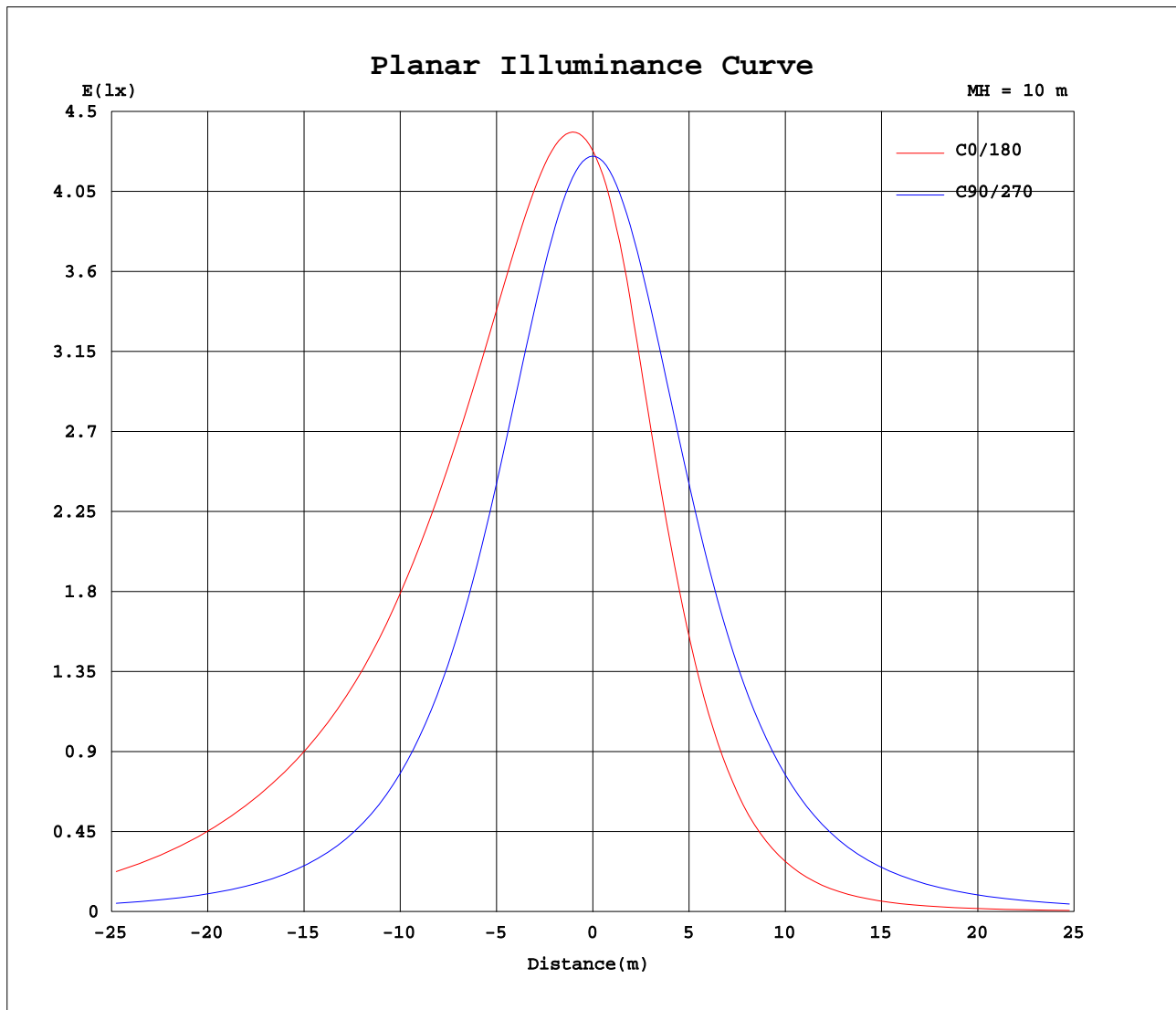
Test:U:220.6V I:0.1083A P:22.62W PF:0.9475 Lamp Flux:1195.89x1 lm		
NAME: FW10-22W-830	TYPE:Downlight	SERIAL No.:
SPEC.:3000K	DIM.: L290mm*W45mm*H60mm	
MFR.:		



C Range: 0 - 360DEG
 C Interval: 15.0DEG
 Test Speed: HIGH
 Temperature: 25.3DEG
 Operators: Meng Yongjian
 Test Date: 2016-10-13

γ Range: 0 - 90DEG
 γ Interval: 1.0DEG
 Test System: EVERFINE GO-2000B_V1 SYSTEM V2.0.288
 Humidity: 52%
 Test Distance: 5.850m [K=1.0000]
 Remarks:

Planar Illuminance Curve



C Range: 0 - 360DEG
C Interval: 15.0DEG
Test Speed: HIGH
Temperature: 25.3DEG
Operators: Meng Yongjian
Test Date: 2016-10-13

γ Range: 0 - 90DEG
 γ Interval: 1.0DEG
Test System: EVERFINE GO-2000B_V1 SYSTEM V2.0.288
Humidity: 52%
Test Distance: 5.850m [K=1.0000]
Remarks:

LUMINOUS DISTRIBUTION INTENSITY DATA

Test:U:220.6V I:0.1083A P:22.62W PF:0.9475 Lamp Flux:1195.89x1 lm		
NAME: FW10-22W-830	TYPE:Downlight	SERIAL No.:
SPEC.:3000K	DIM.: L290mm*W45mm*H60mm	
MFR.:		

Table--1

UNIT: cd

[illegible]

C Range: 0 - 360DEG
C Interval: 15.0DEG
Test Speed: HIGH
Temperature: 25.3DEG
Operators: Meng Yongjian
Test Date: 2016-10-13

```

γ Range: 0 - 90DEG
γ Interval: 1.0DEG
Test System:EVERFINE GO-2000B_V1 SYSTEM V2.0.288
Humidity:52%
Test Distance:5.850m [K=1.0000]
Remarks:

```

LUMINOUS DISTRIBUTION INTENSITY DATA

Test:U:220.6V I:0.1083A P:22.62W PF:0.9475 Lamp Flux:1195.89x1 lm		
NAME: FW10-22W-830	TYPE:Downlight	SERIAL No.:
SPEC.:3000K	DIM.: L290mm*W45mm*H60mm	
MFR.:		

Table--2

UNIT: cd

[illegible]

C Range: 0 - 360DEG
C Interval: 15.0DEG
Test Speed: HIGH
Temperature: 25.3DEG
Operators: Meng Yongjian
Test Date: 2016-10-13

```

γ Range: 0 - 90DEG
γ Interval: 1.0DEG
Test System:EVERFINE GO-2000B_V1 SYSTEM V2.0.288
Humidity:52%
Test Distance:5.850m [K=1.0000]
Remarks:

```

Photometric Data Table [cd]

G/C	0.0	15.0	30.0	45.0	60.0	75.0	90.0	105.0	120.0	135.0
0.0	427.9	427.0	426.8	426.0	425.8	425.2	424.9	424.6	424.2	424.2
3.0	437.8	436.6	435.1	432.6	429.9	426.8	423.6	420.6	417.4	415.3
6.0	445.8	444.1	441.4	437.0	431.7	425.9	419.6	413.8	408.1	403.6
9.0	452.1	450.1	445.9	439.4	431.5	422.7	413.3	404.6	395.7	387.8
12.0	457.2	454.7	449.0	440.3	429.3	417.4	404.6	392.9	380.0	369.7
15.0	461.3	458.2	450.8	439.7	425.6	410.2	393.8	378.9	362.1	347.6
18.0	464.5	460.9	451.7	438.0	420.4	401.3	381.1	362.7	342.0	322.4
21.0	467.2	462.9	451.8	435.3	414.1	390.9	366.7	344.3	319.3	296.7
24.0	469.9	464.8	451.5	431.8	406.7	379.4	351.0	324.6	295.0	270.2
27.0	473.1	467.0	451.1	427.8	398.7	366.7	333.9	303.9	270.7	243.8
30.0	476.9	469.8	451.0	423.6	389.9	353.3	316.0	282.5	246.1	218.0
33.0	481.8	473.4	451.2	419.3	380.9	339.5	297.3	260.2	221.6	193.1
36.0	487.5	477.7	452.0	415.1	371.7	325.3	278.1	237.8	197.8	169.4
39.0	493.6	482.6	453.1	411.1	362.5	311.0	258.8	215.1	175.0	147.2
42.0	499.9	487.5	454.4	407.2	353.3	296.7	239.3	193.0	153.3	126.1
45.0	506.1	492.3	455.3	403.3	344.1	282.5	220.0	171.8	132.8	107.5
48.0	511.7	496.5	455.6	398.9	334.7	268.4	201.0	151.3	113.7	90.39
51.0	517.5	500.2	454.9	393.6	325.1	254.4	182.5	131.6	96.43	75.43
54.0	524.0	504.9	453.4	387.2	315.0	240.4	164.5	113.0	80.81	62.46
57.0	528.0	507.4	451.6	379.2	304.1	226.4	147.1	96.06	66.78	51.07
60.0	525.8	505.2	446.4	370.1	292.0	212.4	130.4	80.48	54.40	41.33
63.0	510.2	492.0	435.3	358.6	278.7	198.1	114.4	66.28	44.02	33.22
66.0	472.1	459.4	412.0	342.8	263.9	183.6	99.16	53.46	35.07	26.52
69.0	403.1	398.6	368.5	318.9	247.8	168.5	84.49	42.09	27.52	21.01
72.0	307.5	310.2	300.1	280.3	226.3	152.4	70.39	32.14	21.27	16.41
75.0	205.3	211.3	214.5	221.9	197.6	135.0	56.90	23.78	16.21	12.57
78.0	118.5	125.2	131.5	149.8	155.2	115.2	44.26	16.89	11.99	9.388
81.0	54.31	58.05	66.01	81.52	98.59	91.50	32.30	11.43	8.440	6.693
84.0	8.833	11.58	17.30	29.63	44.25	58.47	20.39	6.870	5.452	4.464
87.0	0.6188	0.8056	1.073	1.333	4.300	18.18	8.763	3.363	2.889	2.387
90.0	0.1946	0.3323	0.4854	0.5204	0.5882	0.6559	0.9446	0.7653	0.8549	0.8724
G/C	150.0	165.0	180.0	195.0	210.0	225.0	240.0	255.0	270.0	285.0
0.0	423.7	423.8	427.0	426.8	426.0	425.8	425.2	424.9	424.6	424.2
3.0	413.0	412.1	415.9	415.2	416.2	417.0	419.1	421.0	423.7	426.1
6.0	398.9	396.4	399.7	399.4	402.2	405.2	409.8	414.2	419.8	425.2
9.0	381.0	377.4	380.0	380.1	384.3	389.1	397.4	404.8	413.5	421.8
12.0	359.3	352.8	354.5	355.3	362.7	370.7	381.5	392.9	404.8	416.4
15.0	333.1	325.8	326.7	327.8	336.2	347.9	363.6	378.5	393.9	409.1
18.0	306.2	297.5	297.8	299.3	309.0	322.5	343.0	361.9	381.2	400.1
21.0	278.4	268.8	268.6	270.3	280.8	296.3	319.8	343.1	366.6	389.5
24.0	250.7	240.8	240.2	242.0	252.9	269.4	295.1	323.0	350.7	377.7
27.0	223.7	213.3	212.3	214.3	225.6	242.7	270.5	302.1	333.4	364.9
30.0	197.5	186.9	185.7	187.7	199.1	216.7	245.6	280.2	315.3	351.3
33.0	172.5	162.2	160.9	162.9	173.8	191.7	220.8	257.7	296.4	337.1
36.0	149.3	139.3	137.7	139.7	150.5	167.8	196.9	234.4	277.0	322.6
39.0	127.9	117.5	115.7	118.4	128.9	145.6	174.0	211.8	257.3	308.0
42.0	108.3	98.44	96.64	99.23	108.7	125.2	152.3	189.8	237.6	293.4
45.0	90.74	81.74	79.77	82.34	91.20	106.5	131.6	168.3	217.7	278.6
48.0	75.52	66.88	64.82	67.41	75.91	89.50	112.2	147.4	197.9	263.5
51.0	61.92	54.13	52.05	54.28	62.40	74.59	94.79	127.6	178.5	248.6
54.0	50.42	43.56	41.44	43.62	50.77	61.45	79.12	109.1	159.8	233.8
57.0	40.87	34.78	32.74	34.79	41.17	50.09	65.06	92.03	141.8	219.1
60.0	32.89	27.70	25.80	27.63	33.07	40.35	52.88	76.43	124.0	204.4
63.0	26.42	22.04	20.27	21.92	26.50	32.26	42.50	62.08	107.5	189.3
66.0	21.09	17.47	15.93	17.32	21.11	25.55	33.60	49.49	91.87	173.8
69.0	16.69	13.80	12.47	13.62	16.59	20.12	26.13	38.40	76.98	158.5
72.0	13.03	10.81	9.753	10.63	12.93	15.61	20.01	28.91	62.81	142.8
75.0	10.01	8.380	7.552	8.234	9.933	11.92	15.06	21.00	49.49	126.0
78.0	7.515	6.362	5.769	6.248	7.428	8.874	10.99	14.53	37.03	108.4
81.0	5.449	4.687	4.256	4.574	5.413	6.358	7.749	9.527	25.54	88.04
84.0	3.598	3.109	2.824	3.035	3.583	4.235	5.067	5.792	14.97	60.32
87.0	1.915	1.646	1.537	1.666	1.938	2.266	2.752	3.029	5.821	22.59
90.0	0.8680	0.8134	0.6472	0.6975	0.7128	0.7303	0.6581	0.7281	0.5619	0.5248
G/C	300.0	315.0	330.0	345.0						
0.0	424.2	424.2	423.7	423.8						
3.0	428.4	430.7	432.0	433.2						
6.0	430.4	435.0	438.4	440.7						
9.0	430.2	437.5	443.0	446.6						
12.0	428.1	438.2	446.2	451.2						
15.0	424.4	437.7	448.1	454.7						
18.0	419.3	435.9	449.1	457.3						
21.0	413.0	433.2	449.3	459.3						

C Range: 0 - 360DEG
 C Interval: 15.0DEG
 Test Speed: HIGH
 Temperature: 25.3DEG
 Operators: Meng Yongjian
 Test Date: 2016-10-13

γ Range: 0 - 90DEG
 γ Interval: 1.0DEG
 Test System: EVERFINE GO-2000B_V1 SYSTEM V2.0.288
 Humidity: 52%
 Test Distance: 5.850m [K=1.0000]
 Remarks:

Photometric Data Table [cd]

24.0	405.6	429.7	449.0	461.3
27.0	397.4	425.7	448.5	463.4
30.0	388.7	421.3	448.3	466.1
33.0	379.4	416.9	448.3	469.6
36.0	370.0	412.5	448.9	473.8
39.0	360.6	408.2	449.9	478.4
42.0	351.2	404.1	450.9	483.2
45.0	341.6	399.9	451.6	487.9
48.0	331.3	395.2	451.8	491.9
51.0	320.7	389.6	450.8	495.3
54.0	309.8	383.0	449.0	499.7
57.0	298.6	374.7	447.1	501.9
60.0	286.6	364.9	441.6	499.8
63.0	273.7	353.5	431.2	487.3
66.0	259.4	337.7	410.2	456.1
69.0	244.0	315.2	370.6	397.6
72.0	224.1	279.7	307.1	311.6
75.0	198.1	225.2	224.2	213.6
78.0	160.5	155.6	141.3	126.4
81.0	107.5	87.61	71.87	61.50
84.0	52.18	34.03	22.07	13.58
87.0	9.751	1.266	0.9007	0.7325
90.0	0.3717	0.3214	0.2821	0.2449

C Range: 0 - 360DEG
C Interval: 15.0DEG
Test Speed: HIGH
Temperature: 25.3DEG
Operators: Meng Yongjian
Test Date: 2016-10-13

γ Range: 0 - 90DEG
γ Interval: 1.0DEG
Test System: EVERFINE GO-2000B_V1 SYSTEM V2.0.288
Humidity: 52%
Test Distance: 5.850m [K=1.0000]
Remarks: